



PO BOX 578 CASINO, NSW 2470, AUSTRALIA
 PHONE: INTERNATIONAL ++614 2902 9083
 AUSTRALIA (04) 2902 9083

Web: <http://www.rcs-rc.com> Email: rcs@rcs-rc.com

RCS # BIK-K-27.
DIY BATTERY INSTALLATION KIT

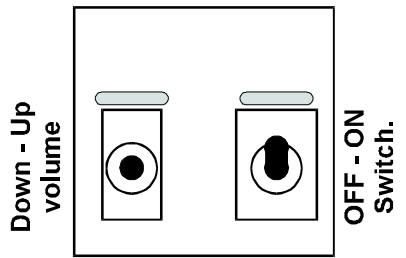
This **RCS # BIK-K-27** R/C battery installation kit comprises the following components:

- 1 x PCB with one DPDT ON-OFF switch, 1 SPDT volume control switch, 2 x Polyswitch® 3 amp auto reset fuse and screw terminals.
- 1 x Pre-wired DC co-axial jack (socket)
- 1 x Predrilled styrene mounting sheet.

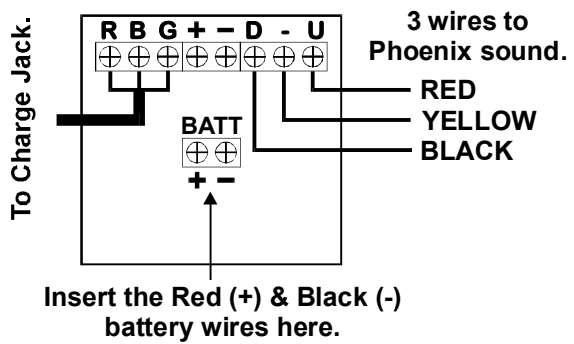
Mount switch assembly and charge jack as shown here. Connect wires as shown.



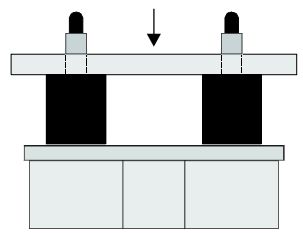
TOP VIEW

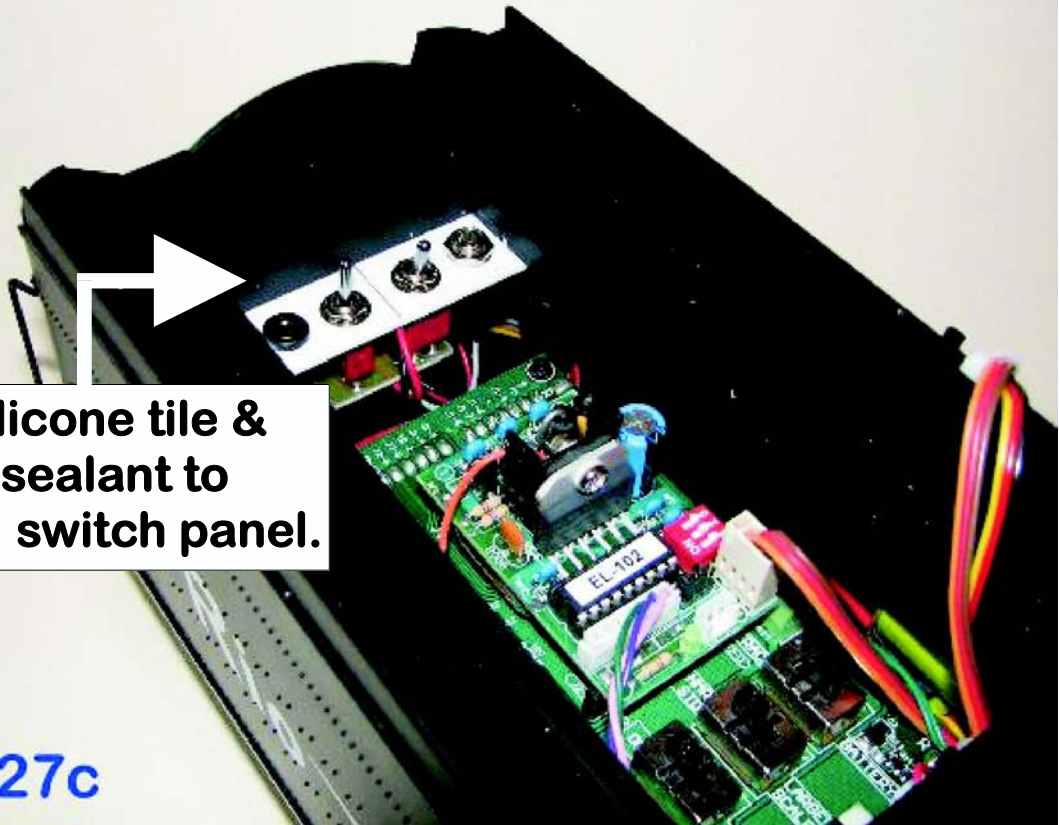


BOTTOM VIEW



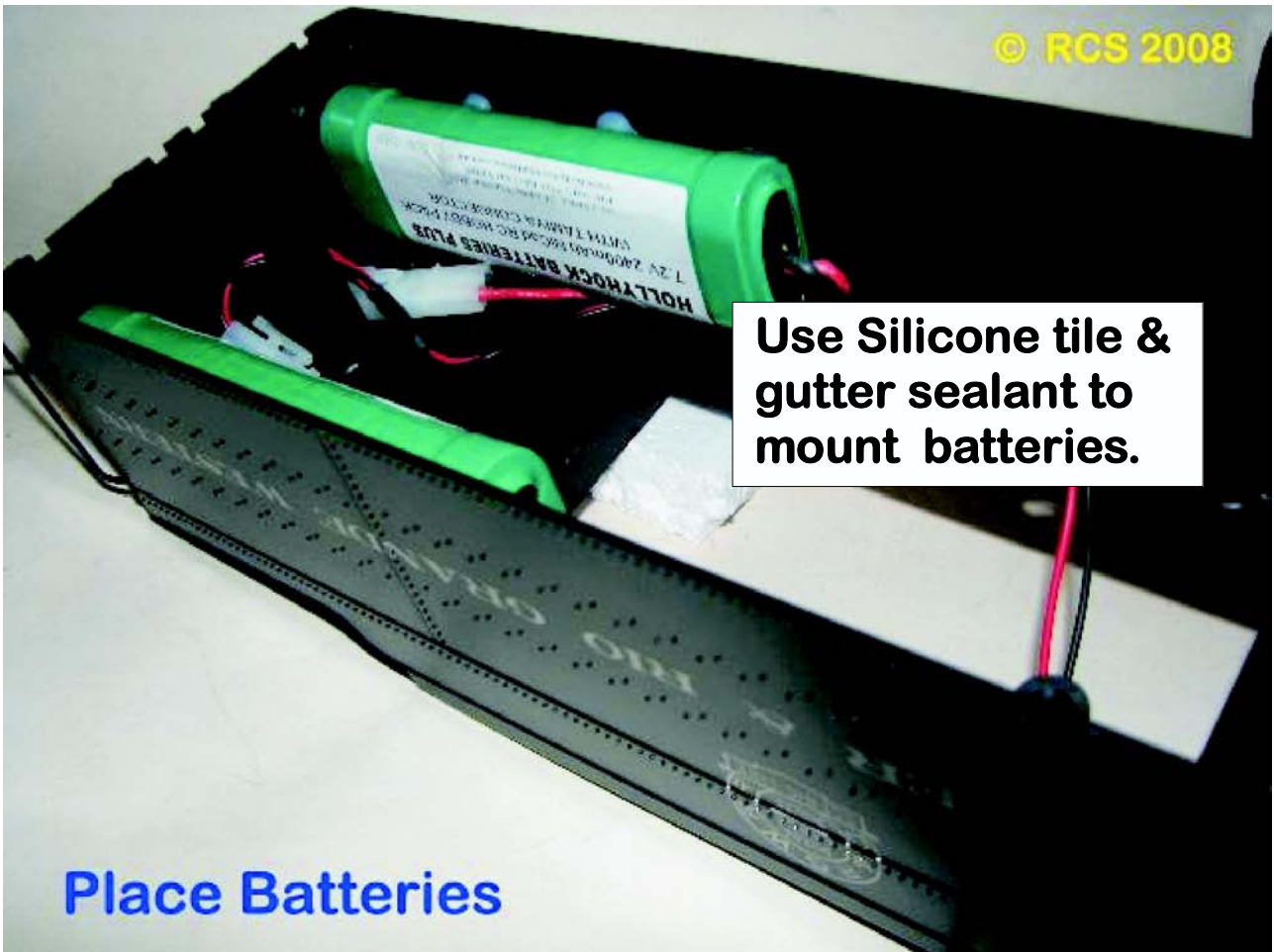
VIEW FROM CAB BACKWARDS
 SUPPLIED STYRENE MOUNTING SHEET.





Use Silicone tile & gutter sealant to mount switch panel.

BIK-K27c



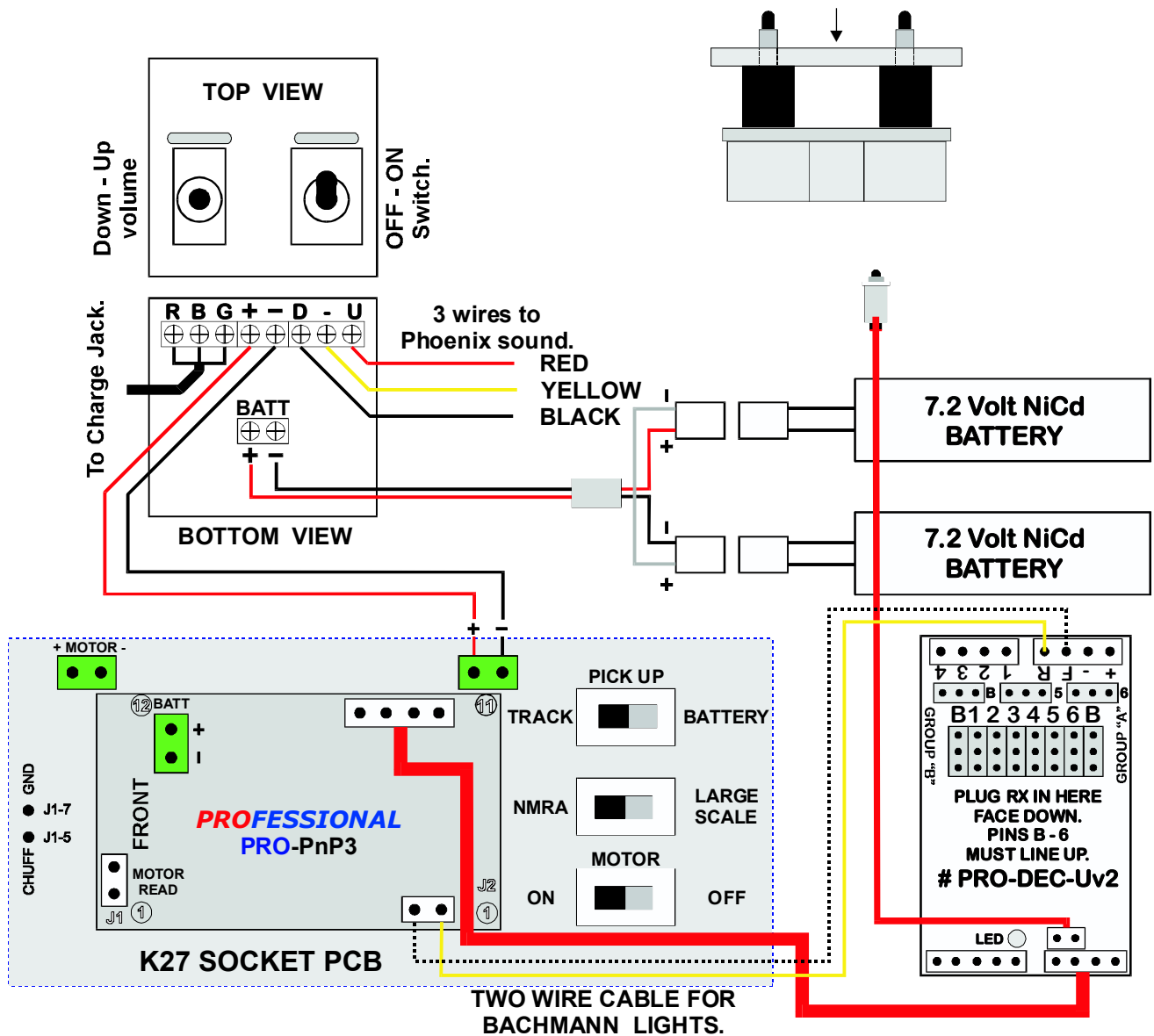
Use Silicone tile & gutter sealant to mount batteries.

Place Batteries

WIRING THE **RCS PRO-PnP3 ESC** with **BACHMANN K-27 PnP** socket using **Track Power OR Battery Power** Using a # **BIK-K27** installation kit. Set **TRACK - BATTERY** switch to **Suit**.

N.B. Maximum current on each transistor is 100 ma. See page # 3.

VIEW FROM CAB BACKWARDS
SUPPLIED STYRENE MOUNTING SHEET.



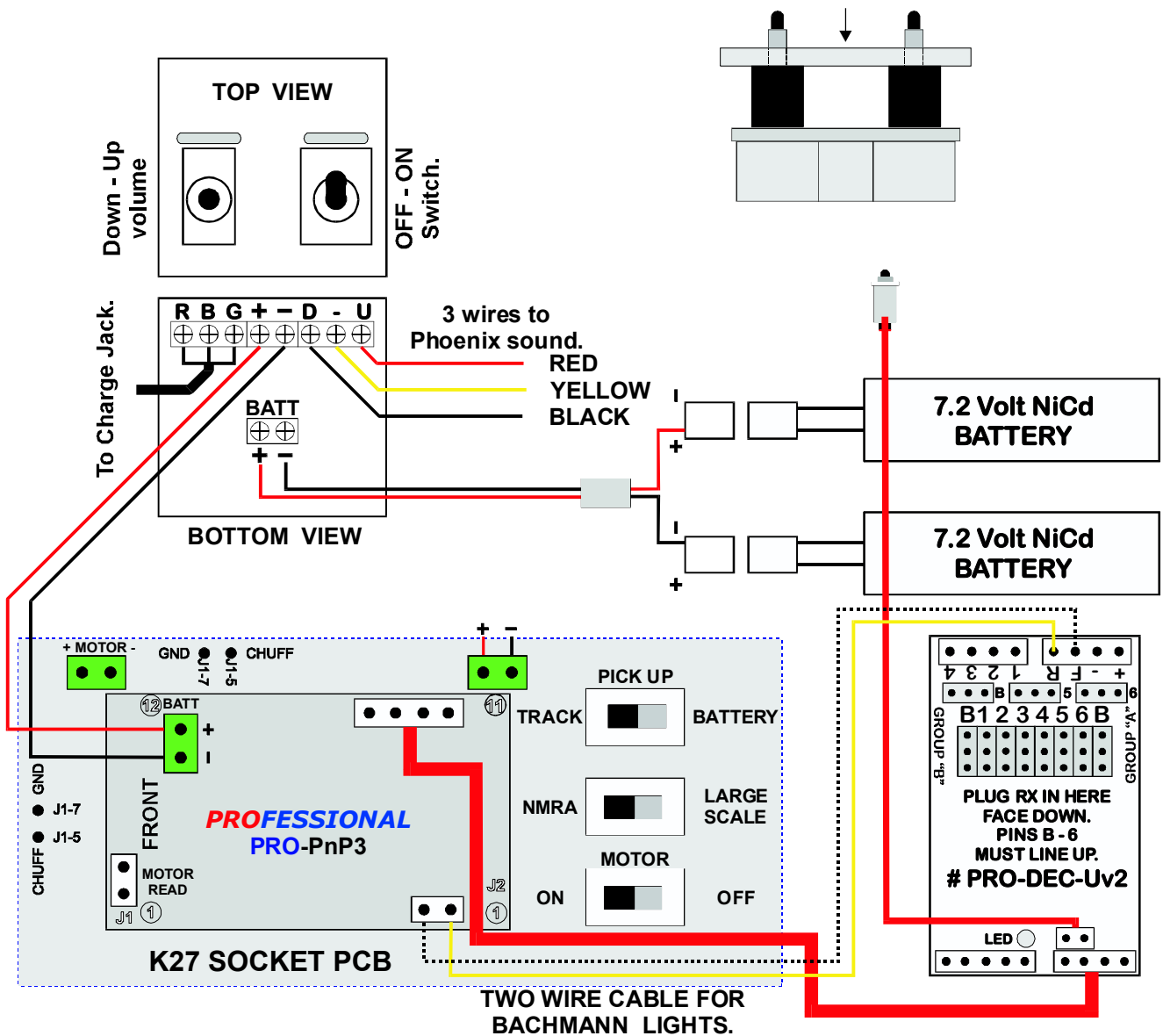
CAUTION:

IT IS MOST IMPORTANT THAT THE SOUND & LIGHTING CABLES ARE PLUGGED INTO THE CORRECT SOCKETS. FAILURE TO DO MAY DAMAGE THE # DEC-U.

WIRING THE **RCS PRO-PnP3 ESC** with **BACHMANN K-27 PnP socket** using **Track Power AND** battery back up with a # **BIK-K27** installation kit. **Set TRACK - BATTERY switch to TRACK only.**

N.B. Maximum current on each transistor is 100 ma. See page # 3.

VIEW FROM CAB BACKWARDS
SUPPLIED STYRENE MOUNTING SHEET.

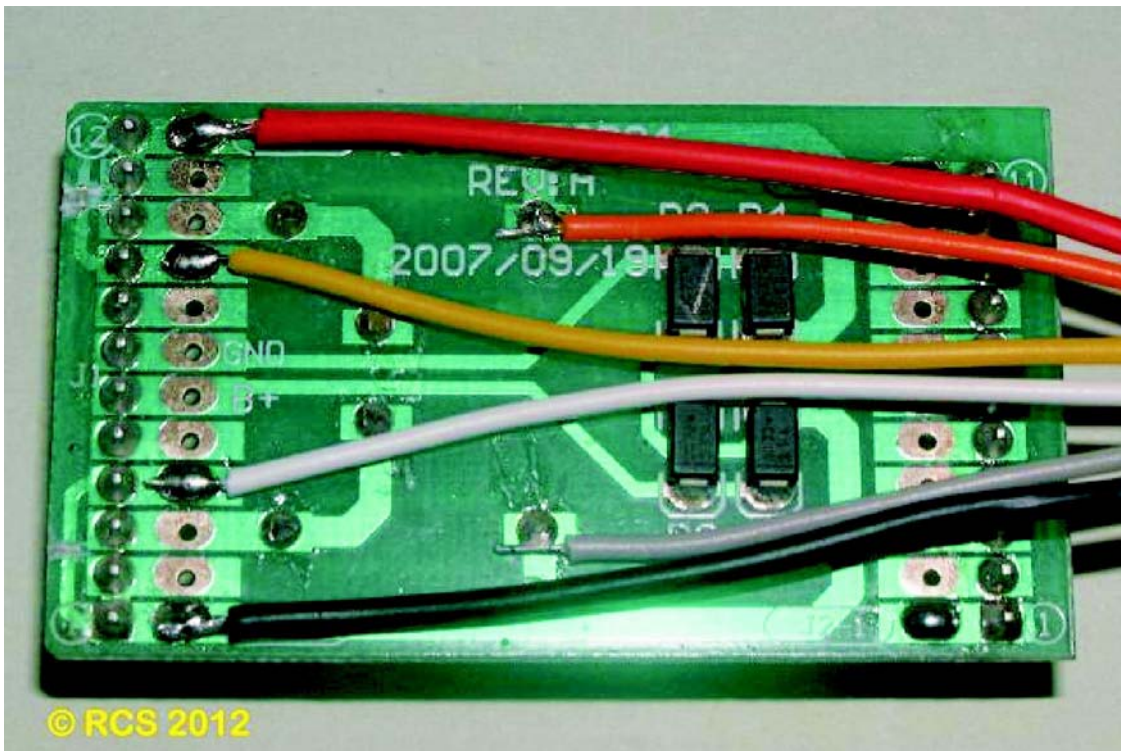
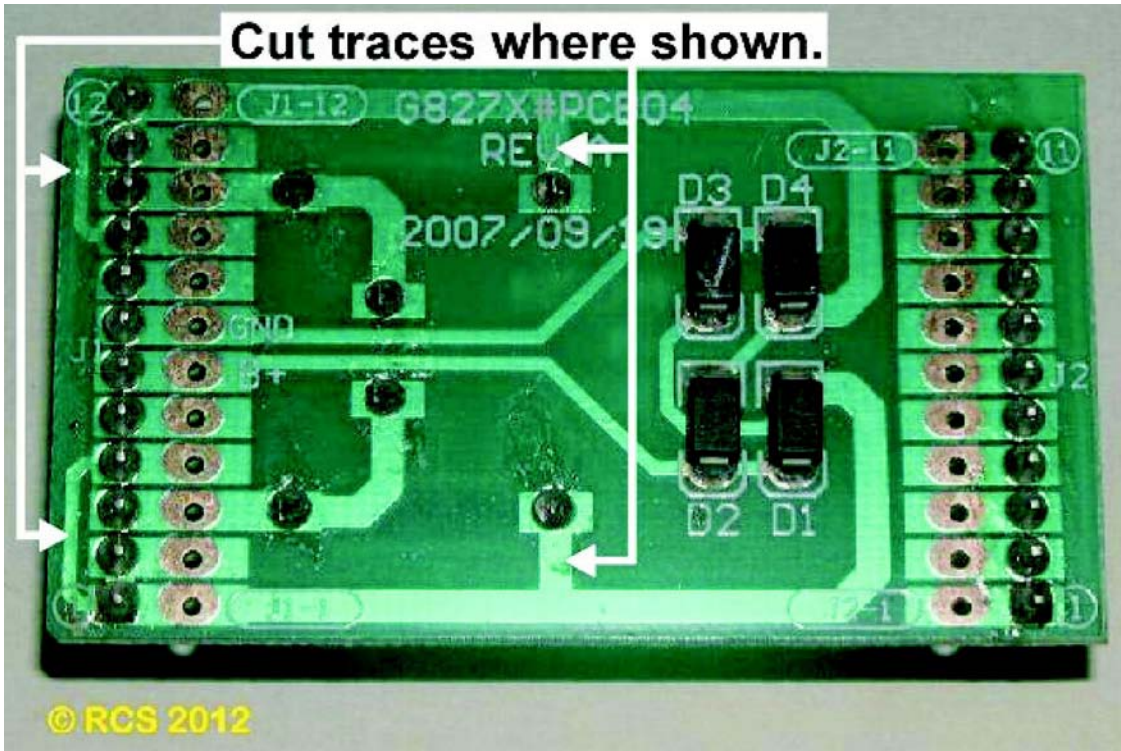


CAUTION:

IT IS MOST IMPORTANT THAT THE SOUND & LIGHTING CABLES ARE PLUGGED INTO THE CORRECT SOCKETS. FAILURE TO DO MAY DAMAGE THE # DEC-U.

MODIFYING THE DUMMY BACHMANN K-27 PnP plug for use with any non PnP ESC.

Set TRACK - BATTERY switch to BATTERY only.



Wiring legend from pcb to ESC.

- | | | |
|-------|--------|-----------------------------|
| J1 1 | Black | Battery (- Ground) |
| J1 3 | Grey | Motor (-) via the rf choke? |
| J1 4 | White | Front Light |
| J1 9 | Yellow | Rear Light |
| J1 10 | Orange | Motor (+) via the rf choke? |
| J1 12 | Red | Battery (+ Positive) |